



Research and Development

Actively shaping the future of mental health care

Annual Report 2021/22

Dedicated to generating high-quality, innovative research into mental health, learning disabilities and neurodiversity, the Research and Development department at LYPFT change lives in the UK. Using its specialist expertise, unique population and collaborative approach, the Research and Development team bridges boundaries, provides hope and is actively shaping the future of mental health care.



Student Nurse
nominated for
Student of Year:
Clinical Research
award

Introduction

2021/22 continued to be a testing time for the NHS with restriction on how we can operate as well as high levels of staff absences due to COVID. Despite these challenges the Research and Development department continued deliver high-quality research across a range of service areas.

This year saw the retirement of Professor Barry Wright from COMIC and the team have adjusted to ensure a longevity for COMIC. The Leeds and York research teams have started to work more closely together with 8-weekly joint team meetings allowing for a more joined up research department sharing expertise and resource.

Both teams have had to change accommodation during the last year but have managed the disruption that this entailed. We welcomed our first paid research ambassador to the department in 21/22 ensuring we continue to lead the way in service user centred research. We were able to deliver a face to face forum this year and this received very positive feedback.

This year saw a large increase in the number of grants we have submitted (18) this is due to the appointment of 2 Research Fellows who are dedicated to this activity. Over time this should allow us to increase grant income and grow our own research.

We are also pleased to note that this year Hannah Shephard was nominated for Student of Year award for Clinical Research for the Nursing Times. This was for the work she has supported setting up the Research Experience. The ASSIST2 team were shortlisted for a Yorkshire and Humber Clinical Research Network award for delivering research in a non NHS setting.

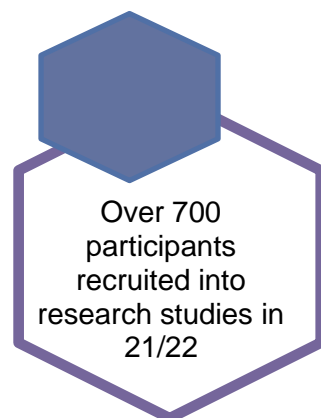


Hannah Shephard

Nursing Times Student of the Year nomination for
Clinical Research

Clinical Research Activity

In 21/22 over 700 participants were recruited into research studies across the Trust. Participants were recruited across a range of services within the Trust as shown in chart 1. Whilst recruitment was lower than last year the proportion recruits coming from interventional studies was high for our organisation and the highest for the region. This reflects the type of studies we have supported this year which has included studies with complex interventions and service users with more complex needs. We aim to have a balanced portfolio and have also contributed to some online surveys studies this year. Ten out of the 13 studies that closed this year recruited to time and target (they recruited the recruits they needed in the timeframe required).



During 21/22 the department continued to support vaccine studies at LHT with Bank staff from our organisation being used to support follow up appointments and booster studies.

We continue to expand the use of Consent for Contact. This is where in the consent section of CareDirector service users are now able to identify their consent to be approached about research. If consent is given this allows the Research and Development team to approach service users that are potentially eligible for research directly. There are many benefits to this approach. This year we were able to join a Trustwide project where service users were contacted about their preferred communication approach. They were also asked about Consent for Contact. There have been some challenges with this project generally and less people responded than anticipated but it has allowed us to get consent from a larger number of service users. **2849** service users have now consented to be contacted. We continue to work on this to ensure it is a useful tool for research.

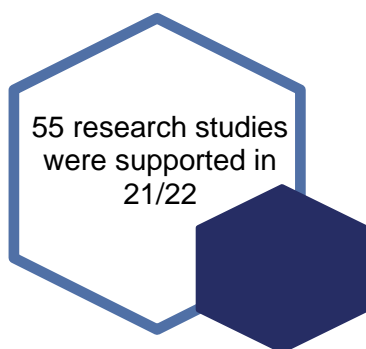
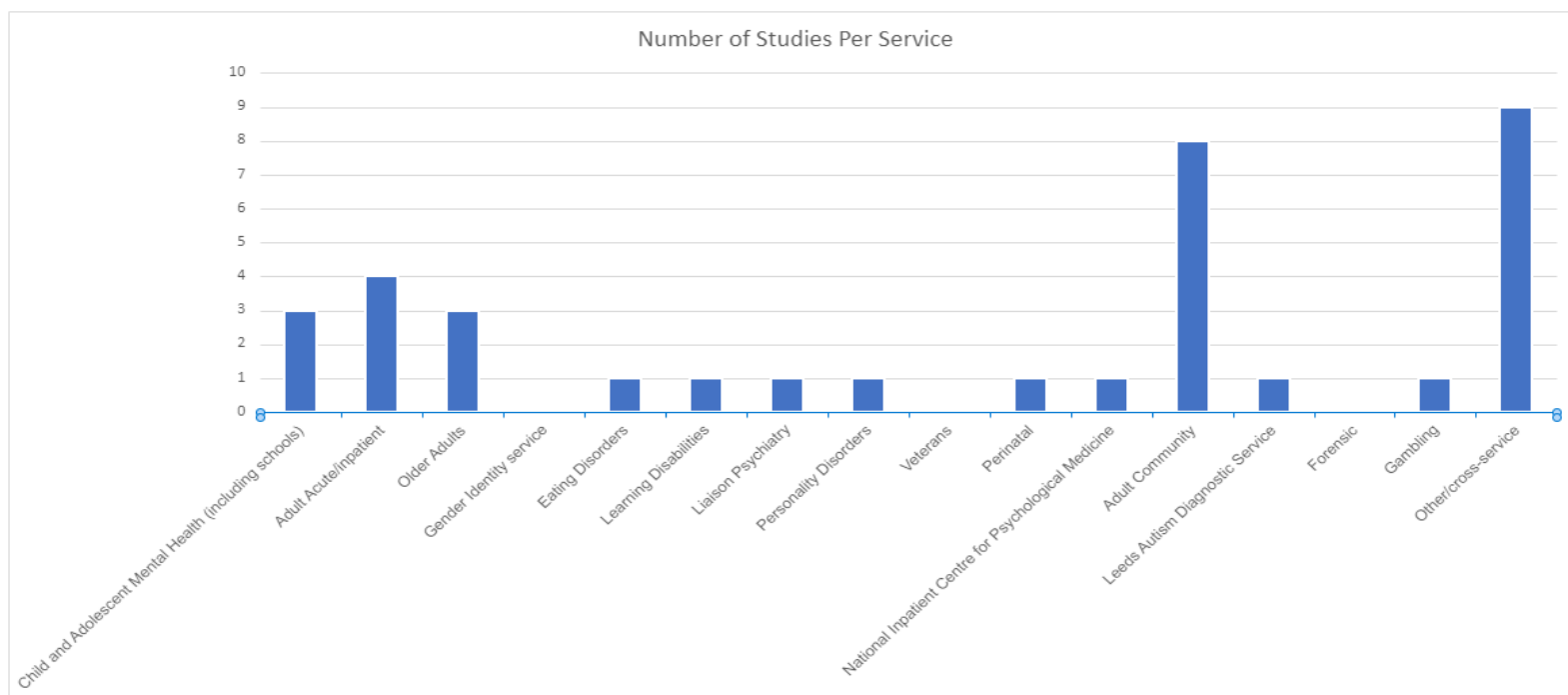


Chart 1 Number of research studies Trust services have supported (some studies will include multiple services and these have been counted in all services they cover)




The Trust was the lead organisation for six significant grant funded studies in 2020/21 These are:

COUNTED aims to understand how medications are described to people within Memory Assessment Services. The study will examine how medications are talked about in appointments by video or audio recording conversations between medical professionals and people attending Memory Assessment Services.

ASSIST2 tests a novel intervention to teach children with autism spectrum disorders social information when they are becoming anxious or frustrated. It is a clinical trial that will recruit 276 children and the intervention can be delivered after training by school teachers working with parents.

FRESH START is the first programme funded by NIHR to address the problem of repeated self-harm in adults. Over the next 5 years the research team will develop and test a psychological intervention, initially through a number of preliminary work packages undertaken in collaboration with people with personal experience of self-harm and with



Highest weighed*
recruitment in a
Mental Health Trust
for Yorkshire and
Humber in 21/22

clinicians. They will then test the intervention in the largest clinical trial undertaken on this topic anywhere in the world, recruiting over 600 participants in 12 centres in the UK.

Safety Nets is a social prescribing intervention aimed at young people on CAMHS waiting lists. The 8-week programme combines physical activity sessions, with local sports clubs, with psychoeducation sessions led by CAMHS clinicians. The feasibility study aims to recruit 96 participants over 2 cohorts. Cohort 1, 3 NHS Trusts and 3 Sites (Sports Club), Cohort 2, 4 NHS Trusts and 6 Sites.

CONIFA is a study to co-design a nature-based intervention for children and young people with ADHD and their families. The study will design and test this intervention through co-design workshops with children, families and professionals with lived experience of ADHD.

MoreRESPECT is a randomised controlled trial of a sexual health promotion intervention for people with severe mental illness delivered in community mental health settings. The study aims to determine if an intervention designed to promote sexual health for people with severe mental illness is clinically and cost-effective.



*Weighed recruitment gives greater weighing to interventional recruits.

Development of research opportunities for staff

Here we describe some of the Trust's work towards the Royal College of Physicians' position that high-quality research in the NHS is everyone's responsibility and a core part of clinical care. We recognise that research provides opportunities for individual development, adds interest and variety to job roles and improves recruitment and retention.

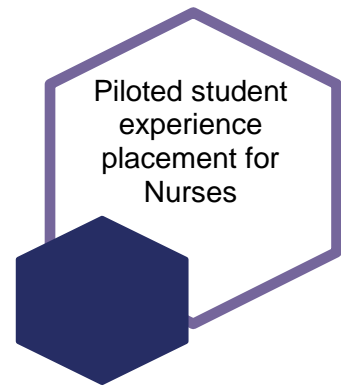
We have been implementing objectives from the Research Strategic Plan 2018-21 in order to give staff opportunities to develop their careers.

We continue to support **Academic Clinical Fellows** and now have 5 people in post. They are working with their senior academic clinical supervisors within the trust to develop research projects on topics ranging from self-harm to improving physical health care for people with chronic mental illness. They are also all enrolled on the University of Leeds health research PGCert. All of this is helping them develop PhD fellowship applications, which if they are successful with, will enable them to go onto be our academics of the future. One of the Research Fellows submitted her NIHR PhD Fellowship application in January 2022.

We supported a **Cardinal Clinical Academic Research Fellow** in 21/22. This individual is funded 50% of their time by the Trust for their clinical role and 50% of their time through RCF funding. The fellow continues to progress in her PhD and raise her research profile nationally.

A formal evaluation of the **Internship programme** (which was run in 2021) has been completed to establish the views of interns and supervisors as well as outcomes. It found that both interns and supervisors enjoyed the internship and found it a positive experience. It is still too early to determine longer term outputs and these will be tracked through an annual survey.

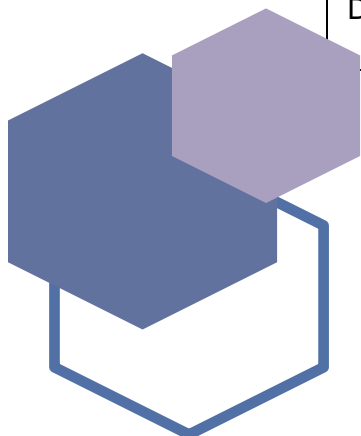
A **Research Experience** has been developed jointly between the Research and Development department and a student Nurse within the organisation. This was started by a member of the research team doing a talk at Leeds University with 3rd year Nursing students. One of the students was keen to learn more about research and so worked with the research team member to develop an experience that would be useful and




interesting to students. We are unable to take student nurse for placements as we don't have any research nurses so this gives us the opportunity to wider students knowledge of the practical delivery of research within the trust. The student was shortlisted for Nursing Times, Student of the Year: Clinical Research for this work. We hope to extend the offer of the Research Experience to all future students Nurses and AHPs.

Five **pump priming grants** were awarded in 21-22 in a competitive process. The projects are outlined in the table below. One was unable to complete due to the Trust going into business continuity. In order to be successful, the applicants had to demonstrate that the pump priming grants would lead to further external grants in the future. It worth noting that the delivery of these projects has had more immediate benefits. A range of student dietitians have been involved in the COBALT study increasing their practical skills of research delivery. Outputs from the unmet communication needs of patients are of immediate use and interest to the clinical service.

Emma Pearce	Establishing the unmet communication need of patients living with dementia in the LYPFT OPS inpatients units
Dr George Crowther, Dr Matthew Davis & Dr Helen Hughes, Dr Rachael Prof. Alison McKay	Applying computer modelling, simulation and socio-technical systems analysis to improve NHS dementia care outcomes.
George Crowther*, Emma Wolverson, Gregor Russell and Ben Underwood	Setting research priorities for inpatient mental health wards supporting people with dementia
Dr Clare Fenton and Dr Jennifer McIntosh	The COBALT Study: A Randomised Control Trial of Continuous enteral feeding vs Bolus Feeding for Adolescents with Anorexia nervosa





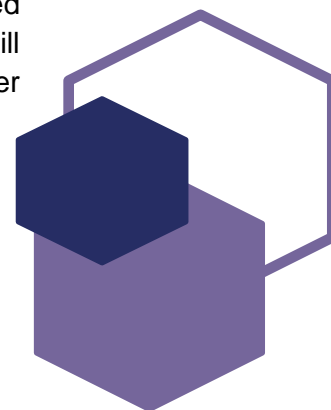
18 bids for grant
funding submitted
in 21/22

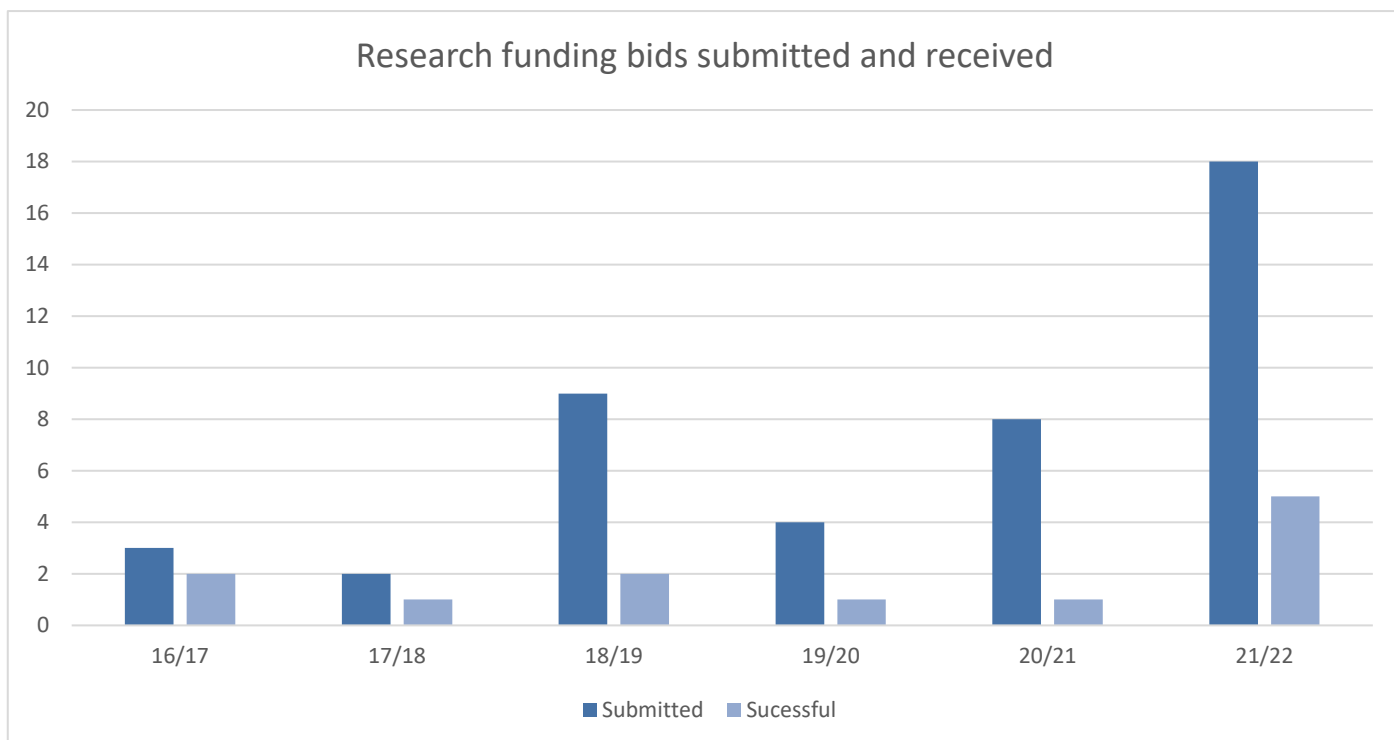
Research funding

Research grant funding of over £6.8M from the National Institute for Health Research (NIHR) programmes and the Medical Research Council was administered by the Trust in 2021-22. This funding was for the following studies (see above for study summaries):

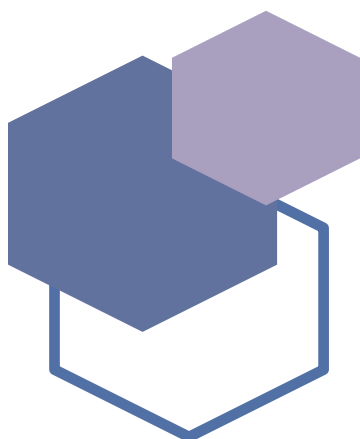
- Autism Spectrum Social Stories™ In Schools Trial 2 (ASSIST2)
- Function REplacement in repeated Self-Harm: Standardising Therapeutic Assessment and the Related Therapy: (FReSH START)
- COUNTED Communication about treatment options in Memory Assessment Services (MAS)
- CONIFA Nature based intervention for children with ADHD
- I-Socialise Lego Lego based intervention for children with Autism
- A systematic review of early intervention for parents of deaf babies
- ASPECT- Alleviating specific phobias experienced in children trial
- Attachment – routinely used interventions for improving attachment in infants and young children: a systematic review and comprehensive UK survey


During the year the Trust was involved in submitting 18 bids for research funding (Appendix 1). This is a significant increase on previous years and is because of an investment of funding to employ two Research Fellow to write grants. Seven of the bids were led by the Trust. The bids were submitted to a range of research funders including the NIHR. Within 21/22 we received five grants, nine applications were unsuccessful and four are still pending a final decision. The bar chart below shows the number of LYPFT-led bids over time and the outcomes.





NIHR grant funding brings with it additional resource from the NIHR known as Research Capability Funding (RCF). This is calculated annually on the basis of the grant received by the Trust in the previous calendar year. This funding is used for staff that are writing bids, supporting researchers who are leading NIHR studies and for some accommodation costs of these staff.





Research Patient
Ambassador
employed in 21/22

Involvement of service users and carers

A large proportion of the Trust's research participants this year were service users or carers. This year our first paid Research Patient Ambassador started in post. She works one day a week and is chair of the "Help from Experts by Experience for Researchers" HEER group she also supports the research team and wider organisation to ensure that meaningful patient and public involvement is part of research activity.

The "Help from Experts by Experience for Researchers" (HEER) group, facilitated by the R&D team continued to meet regularly to discuss research ideas, study detail, promotion and dissemination with a wide range of researchers who found their input invaluable. The group had to switch to online meetings but have continued to provide support despite this change in ways of working.

The Leeds Recovery College opened in 2019 and delivers a range of education and training courses to help increase awareness and understanding of mental health, wellbeing and personal recovery. One of the courses offered "Let's talk about... Making a difference Research and you" has been co-facilitated by a member of the HEER group alongside our R&D staff. Two courses ran during 21/22 co-led by our Research Patient Ambassador.

We offer participants to our research studies the opportunity to complete a PRES survey. This provides us feedback on participants experience of taking part in research. Twenty-six people responded to the survey. All respondents said they felt research staff had treated them with courtesy and respect. Seventy-three percent of respondent said they agreed or strongly agreed that they would take part in research again. Thirty-four percent of respondents did not know how they would receive the results of the research. This is an area we would like to improve, and we will seek to ensure we are provided with information from study teams upfront on how the results of studies will be shared and we will provide this to participants.

A member of the Research and Development team was seconded one day a week to act as Ethnic Minorities Research Exclusion (EMRI) Hub lead for the Yorkshire and Humber Clinical Research Network. This has allowed us to take a leading role regionally in this area.

Research Dissemination and Impact

There were 56 publications in a wide range of peer reviewed journals in 2021-22 related to research activity conducted in the Trust. A full list is available on the research webpage of the Trust's website and in Appendix 2.

The R&D Newsletter, Innovation, now in its 14th year and 46th edition, presented research and service evaluation outcomes for a wide range of Trust-led work. This quarterly in-house publication has received national acclaim from NHS R&D leaders across the country.

The R&D twitter account [@LypftResearch](#) has 731 followers and has been actively promoting Trust R&D activity and following NHS R&D activity. We have sent 603 tweets over the last year and had 404 retweets.

The Annual Research Forum is an opportunity to celebrate and showcase the outcomes of projects carried out in the previous year(s) and to share details of new research. This year saw the return to an in-person event at StudioOne in Leeds. Sixty seven people attended and were given the opportunity to listen to presentations on a wide range of topics as well as participant in workshops. We attracted speakers from across the country who all gave engaging and assessable presentations. All delegates rated the event and speakers very good or excellent. The event was filmed, and individual presentations are now available for people to view. A [short film](#) giving an overview of the event can also be viewed. There was a poster competition on the day with attendees deciding the winner. Joint first prize was given to 'In BIG letters' by Learning Disabilities, Pharmacy and PET and 'Routinely used interventions for improving attachment in infants and young children: an updated systematic review and comprehensive UK survey' by Megan Garside and Eleni Tsappi. The runner up was 'Alleviating Specific Phobias Experienced by Children Trial' by Sarah Parkinson, Lucy Tindall, Emily Hayward and Barry Wright



Highly rated face to face Research Forum delivered

"Friendly, welcoming atmosphere, informative, great for networking"

"was very well organised event, great speakers, brilliant atmosphere as well"

"Inspiring examples from real world" research"

"Great presenters and presentations thoroughly engaging"

"There was a good number of presenters and a range of topics. The workshops were also good as it enabled some group"

ASSIST2 Team
nominated for award
for research in a non
NHS setting

The COMIC team presented their research at a range of events in 21/22. Specifically, at the UG Nursing conference i-Socialise Lego was presented. Attachment was presented at the Royal College of Paediatrics and Child Health in the British Association for Community Child Health Session. The ASSIST2 team that were part of COMIC were nominated for an award by the NIHR Clinical Research Network Yorkshire and Humber for delivery of research in a non NHS setting.



ASSIST2 Team
nominated for award for
research in a non NHS
setting by NIHR Clinical
Research Network:
Yorkshire and Humber

Left to right
Leah Atwell, Olivia Taylor, Amelia Taylor

Research & Development team

The R&D team lead and provide support for all research across the Trust, predominantly NIHR studies. We also acknowledge the support of staff from across the organisation without whom research would not happen. We are introducing Research Hero/s of the month that acknowledges the support we received from across the Trust and names individuals who gone above and beyond to support research.

"Just wanted to say what a pleasure it's been to work with you this year, and how much I value your support with the study. We literally couldn't do it without you. So thank you."

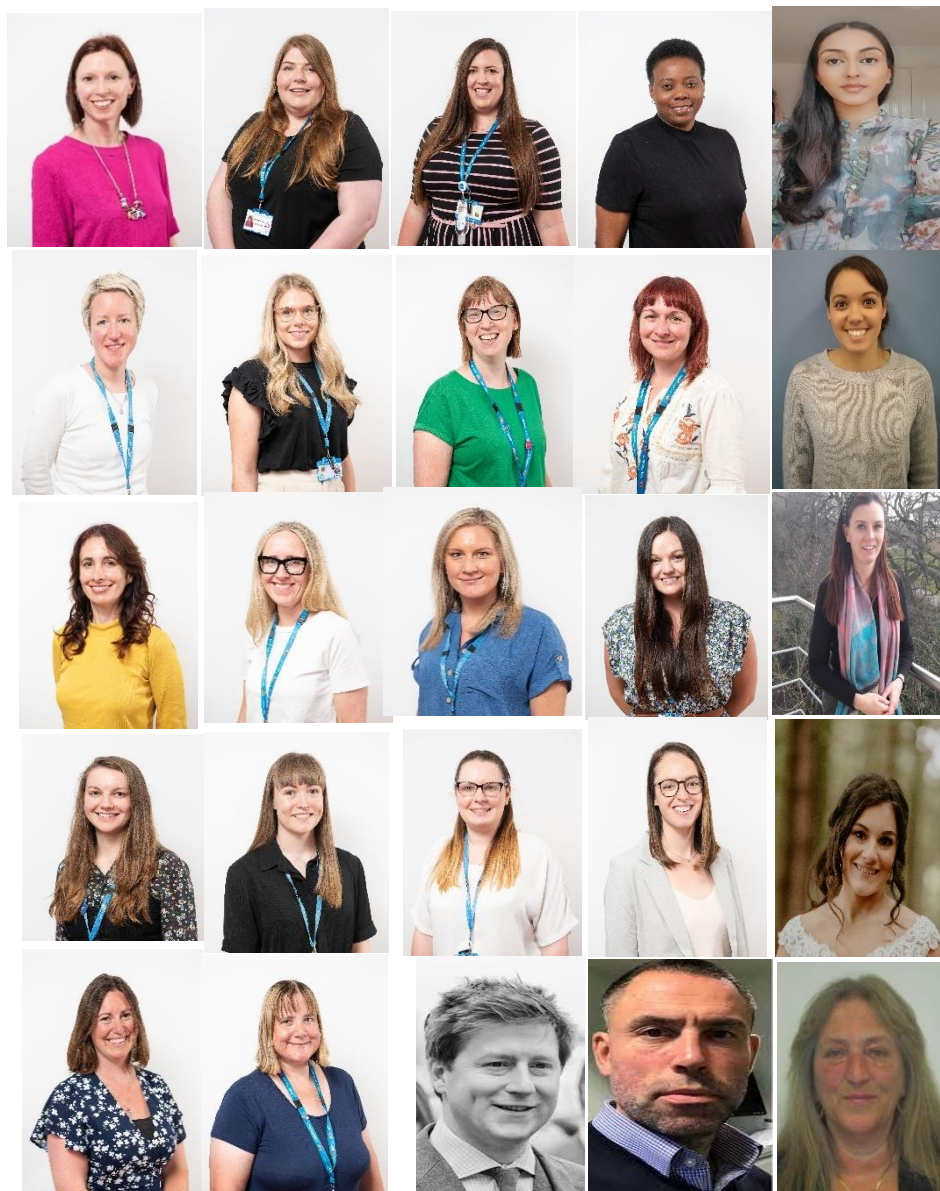
"Thank you for helping our research develop and sharing our goal: to see the wellbeing of people with severe mental ill health grow from a seed into full bloom."

"Leeds is a star in terms of progressing our Co-Pact study - so thank you for all you did."

"From my perspective, LYPFT is currently our best performing trust (well done and thank you!)"

"I would like to say what Abi, Lisa, Nafeesah and Mel have done to the study has been phenomenal to say the least. So, thank you to everyone for every part they played in conducting this study. It has been tough especially with the pandemic, but the efforts were just marvellous'.

Current Research and Development team (June 2022)



Row 1- Sarah Cooper, Zara Brining, Holly Taylor, Abi Wilson, Nafessah Ali
Row 2- Alice Locker, Eleni Tsappis, Charlie Rust, Lisa Hackney Crystal Romain Hooper
Row 3- Sonia Saraiva, Sinead Audsley, Annalisa McGorlick, Sarah Parkinson, Amelia Taylor
Row 4- Leah Atwell, Megan Garside, Zoe Jackson. Ellen Kingsley, Wendy Andrusjak
Row 5- Clare Fenton, Pam Turpin, George Crowther, Max Henderson, Sharon Bird

The year ahead

Continue to deliver high quality research across a range of service areas

Implementation of the Akrivia Health System within the Trust

Launch the new trust research and development strategy

Expansion of the research experience

Pilot the Embed programme with clinical services

Set up a Young Person Advisory Group

Sarah Cooper, Head of Research & Development May 2022



Appendix 1 – Research bids submitted in 2020/21

Full Title/Details	Funding Stream	Sponsor	Lead Trust	Total Value	Outcome
Promoting healthier working lives among people living with or at high risk of multimorbidity: a mixed-method study with recommendations for employers and policy makers	NIHR Policy research programme	Uni of Leeds	N	£667,446.00	Rejected
The assessment, diagnosis and disclosure of dementia during an acute hospital admission and the impacts on older people and their families: Understanding inequalities and improving expertise, experiences, and outcomes	NIHR HS&DR	Uni of West London	N	£899,458.00	Pending
Suppression of the Unfolded Protein Response in Dementia by Remote Assessment and Monitoring (SUPERDREAM).	NIHR EMI	Cambridge Uni	N		Pending
PWICS study - A longitudinal study of Psychological Wellbeing In patients undergoing Colorectal Surgery – stage 1	NIHR RfPB	YTHT	N	£316,340.00	Rejected
Exploring understanding and measurement of non-cognitive symptoms amongst people with dementia	NIHR public involvement fund	LYPFT	LYPFT	£480.00	Successful

Establishing the relationship between staff and ward characteristics and patient safety incidents on mental health wards.	NIHR HS&DR		N	£749,392.00	Rejected
End of life care for people admitted to dementia mental health wards: a mixed methods study establishing the extent of need and exploring key stakeholder perspectives to inform future service development	NIHR RfPB	University of Hull	N	£297,742.00	Rejected
MORE RESPECT - A randomised controlled trial of a sexual health promotion intervention for people with severe mental illness delivered in community mental health settings	NIHR HTA		LYPFT	£1,757,376.28	Successful
Exploring and understanding the assessment of non-cognitive symptoms in people living with dementia	RfPB	LYPFT	LYPFT	£233,308.00	Rejected
Promoting healthier working lives among people living with or at high risk of multimorbidity: a mixed-method study with recommendations for employers and policy makers		Uni of Leeds	N	£667,446.00	Pending
SPACES: Sensory profiling Autism in children using enhanced soundscapes	Rosetrees	UoY	LYPFT	£299,432	Rejected

Social Prescribing for children and young people with Anxiety and Depression (SPADE)	NIHR HTA	LYPFT	LYPFT	£1,150,250.55	Rejected
A systematic review and engagement work to investigate inequalities in child mental health research	NIHR RfPB	LYPFT	LYPFT	£149,687	Rejected
Safety Nets Feasibility Study	Yorkshire Sport Foundation	LYPFT	LYPFT	£18,526.72	Successful
A feasibility trial of evidence-based strategies to improve mental resilience and reduce the risk of self-harming behaviours from child and adolescent interactions with social media: The Shield Project	NIHR PHR	LYPFT	LYPFT	£532,923.85	Rejected
SOUNDFIELDS: A virtual reality therapeutic framework for children with Autism Spectrum Disorder	NIHR i4i	UoY	LYPFT	£149,227	Successful
Development work for the Social Media application	MRC PHIND	LYPFT	LYPFT	£116,653 (80% FEC funded)	Rejected
Creating Research Ecologies to Advance Transdisciplinary Learning (CREATE): A Study of Adolescent Loneliness	MRC Adolescent Mental Health	Uni of Leeds	-	-	Pending

Appendix 2 – Publications 2021-22

All 56 publications relate to research studies that have involved LYPFT staff, premises, service users or carers. Not all publications have a member of LYPFT staff as an author.

Trust Author	Author(s)	Title	Citation
	Gary Lamph, Alison Elliott, Kathryn Jane Gardner, Karen Margaret Wright, Emma Jones, Michael Haslam, Nicola Graham-Kevan, Raeesa Jassat, Fiona Jones and Michael Mckeown	An Evaluation of a Pilot Multi-Professional Offender Personality Disorder (OPD) Higher Education Programme	The Journal of Forensic Practice Research: Early view
Emily Sanger	Paul A Tiffin, Emily Sanger, Daniel T Smith, Adam Troughton, Lewis W Paton	Situational judgement test performance and subsequent misconduct in medical students	Association for the study of Medical Education: Early view
Rachid Istambouli	Aline El Zakhem, Rachid Istambouli, Jean-Francois Jabbour, Joya-Rita Hindy, Amal Gharamti and Souha S Kanj	Diagnosis and Management of Invasive Candida Infections in Critically Ill Patients	Seminars in Respiratory and Critical Care Medicine: Volume 43, Issue 1, pages 46-59
James Richard O'Neill and Clare Stephenson	James Richard O'Neill and Clare Stephenson	Antipsychotic-Induced Laryngeal Dystonia	Psychopharmacology Bulletin 2022 Feb: Volume 52, Issue 1 , pages 61-67

Tariq Mahmood, Soumaya Nasser el din and Chhaya Pandit	Iain D Wilkinson, Tariq Mahmood, Sophia Faye Yasmin, Anneka Tomlinson, Jamshid Nazari, Hamid Alhaj, Soumaya Nasser el din, Joanna Neill, Chhaya Pandit, Shahzad Ashraf, Alastair G Cardno, Steven J Clapcote, Chris F Inglehearn and Peter W Woodruff.	In memory of Professor Iain Wilkinson: cognitive and neuroimaging endophenotypes in a consanguineous schizophrenia multiplex family	Psychological Medicine: First view
Matthew Gaskell	James Banks	Open letter to Ministers re Gambling Act Review	None
Rachid Istambouli	Aline El Zakhem, Rozana El Eid, Rachid Istambouli, Hani Tamim and Souha S Kanj	The Utility of EQUAL Candida Score in Predicting Mortality in Patients with Candidemia	Journal of Fungi, Volume 8, Issue 3 (This article belongs to the Special Issue 10th Trends in Medical Mycology)
Anjula Gupta	Emily Thornhill, Chris Sanderson and Anjula Gupta	A grounded theory analysis of care-coordinators' perceptions of family growth associated with an experience of first episode psychosis	Psychosis Psychological, Social and Integrative Approaches (online)
	Caroline Norrie, Stephanie Bramley, Valerie Lipman and Jill Manthorpe	Transferable Learning about PPIE in Gambling Support Services from Health and Social Care: Findings from a Narrative Review and Workshop with PWLE	Journal of Integrated Care

Clare Fenton	Melissa Brettell, Clare Fenton and Ethan Foster	Linking Leeds: A Social Prescribing Service for Children and Young People	International Journal of Environmental Research and Public Health 2022, Volume 19, issue 3, page 1426
Susan Guthrie	Susan Guthrie, John Baker, Jane Cahill and Bronwyn Hemsley	Mealtime difficulties in adults with mental health conditions: an integrative review	Journal of Mental Health, pp.1-13
Eleni Tsappis	Barry Wright, Helen Phillips, Vicci Ackroyd, Rebecca Joy, Eleni Tsappis and Richard Ogden	Understanding of metaphors for Autism Spectrum Disorder assessment In Deaf people	International Journal on Mental Health and Deafness, Volume 5 Issue 1, 2021
Hayley Carrick and Megan Garside	Barry Wright, Hayley Carrick, Megan Garside, Rebecca Hargate, Ian Noon and Rosie Eggleston	The impact of COVID-19 on deaf children in the United Kingdom	International Journal on Mental Health and Deafness, Volume 5 Issue 1, 2021
Ellen Kingsley	Han-I Wang, Barry Wright, Matthew Bursnall, Cindy Cooper, Ellen Kingsley, Ann Le Couteur, Dawn Teare, Katie Biggs, Kirsty McKendrick, Gina Gomez de la Cuesta, Tim Chater, Amy Barr, Kiera Solaiman, Anna Packham, David Marshall, Danielle Varley, Roshanak	Cost-utility analysis of LEGO based therapy for school children and young people with autism spectrum disorder: results from a randomised controlled trial	BMJ Open, Volume 12, issue 1.

	Nekooi, Simon Gilbody and Steve Parrott		
Jo Ramsden	Jackie Craissati, Jo Ramsden, Sue Ryan, Nicole Webster and Laura West	Intensive intervention and risk management services (IIRMS) three years on: what we need to do better in the offender personality disorder pathway	The Journal of Forensic Practice Volume 23 Issue 4. Dec 2021
George Crowther, David Hall and Reece Yates	Ben G Edmans, Emma Wolverson, Rebecca Dunning, Matthew Slann, Gregor Russell, George Crowther, David Hall, Reece Yates, Michael Albert and Benjamin R Underwood	Inpatient psychiatric care for patients with dementia at four sites in the United Kingdom	International Journal of Geriatr Psychiatry. Dec 2021. (Online)
Madeleine Vernon-Smith	Nicola Walker, Madeleine Vernon-Smith and Michael Townend	A feasibility study of a novel work-focused relational group CBT treatment programme for moderate to severe recurrent depression	Mental Health Review Journal, Volume 26, Issue 4

	Emily Shoesmith, Lisa Huddleston, Fabiana Lorencatto, Lion Shahab, Simon Gilbody and Elena Ratschen	Supporting smoking cessation and preventing relapse following a stay in a smoke-free setting: a meta-analysis and investigation of effective behaviour change techniques	Addiction, Volume116, Issue 11, Pages 2978-2994. November 2021
George Crowther, Noura Ahmed, Deepa Kasa and Zoe Goff	George Crowther, Noura Ahmed, Deepa Kasa, Zoe Goff and Muzahir H Tayebjee	Cardiac monitoring in memory clinics: national survey of UK practice	BJPsych Bulletin , First View , pp. 1 - 6
Megan Garside	Barry Wright, Rebecca Hargate, Megan Garside, Georgina Carr, Tina Wakefield, Ruth Swanwick, Ian Noon and Paul Simpson	A systematic scoping review of early interventions for parents of deaf infants	BMC Pediatrics volume 21, Article number: 467 (2021)
	Patrick Gavin Kehoe, Nicholas Turner, Beth Howden, Lina Jarutyte, Shona Louise Clegg, Ian Brian Malone, Josephine Barnes, Casper Nielsen, Carole Hélène Sudre, Aileen Wilson, Ngoc Jade Thai, Peter Sinclair Blair, Elizabeth Coulthard, Janet Athene Lane, Peter Passmore, Jodi Taylor, Henk-Jan Mutsaerts, David Lee Thomas, Nick Charles Fox, Ian Wilkinson, Yoav Ben-Shlomo and RADAR investigators	Safety and efficacy of losartan for the reduction of brain atrophy in clinically diagnosed Alzheimer's disease (the RADAR trial): a double-blind, randomised, placebo-controlled, phase 2 trial	The Lancet Neurology, Volume 20, Issue 11, November 2021, Pages 895-906

George Crowther	Mohammad Azram, Noura Ahmed, Lucy Leese, Matthew Brigham, Robert Bowes, Stephen B Wheatcroft, Marcus Ngantcha, Berthold Stegemann, George Crowther and Muzahir H Tayebjee	Clinical validation and evaluation of a novel six-lead handheld electrocardiogram recorder compared to the 12-lead electrocardiogram in unselected cardiology patients (EVALECG Cardio)	European Heart Journal - Digital Health, Volume 2, Issue 4, December 2021, Pages 643–648
Mary Franklin-Smith, Monique Schelhase and William Rhys Jones	Amelia Austin, Michaela Flynn, Katie Richards, Helen Sharpe, Karina Allen, Victoria Mountford, Danielle Glennon, Nina Grant, Amy Brown, Kate Mahoney, Lucy Serpell, Gabrielle Brady, Nicole Nunes, Frances Connan, Mary Franklin-Smith, Monique Schelhase, William Rhys Jones, Gerome Breen and Ulrike Schmidt	Early weight gain trajectories in first episode anorexia: predictors of outcome for emerging adults in outpatient treatment	Journal of Eating Disorders volume 9, Article number: 112 (2021)
Kerry Hinsby	Emily Young	Helping to embed a trauma-informed clinical model in a forensic mental health service using the seven-eyed model of supervision	Clinical Psychology Forum No 344 August 2021 pages 59-64
Helen Phillips, Jennifer Sweetman, Rachel Hodgkinson, Emily Hayward, Amelia Ralph-Lewis and Catarina Teige	Barry Wright, Helen Phillips, Victoria Allgar, Jennifer Sweetman, Rachel Hodgkinson, Emily Hayward, Amelia Ralph-Lewis, Catarina Teige, Martin Bland and Ann Le Couteur	Adapting and validating the Autism Diagnostic Interview - Revised for use with deaf children and young people	Autism. Online first. July 2021

	Lu Han, Tim Doran, Richard Ian Gregory Holt, Catherine Hewitt, Rowena Jacobs, Stephanie Louise Prady, Sarah Louise Alderson, David Shiers, Han-I Wang, Sue Bellass, Simon Gilbody, Charlotte Emma Wray Kitchen, Jennie Lister, Johanna Taylor, and Najma Siddiqi	Impact of severe mental illness on healthcare use and health outcomes for people with type 2 diabetes: a longitudinal observational study in England	British Journal of General Practice, Volume 71, Issue 709. July 2021
Rachel Dobbing	Nicola Walker and Rachel Dobbing	A redesigned training and staff support programme to enhance job retention in employees with moderate-severe depression	Mental Health and Social Inclusion, Volume 25 Issue 3, pages 279-295
	Laura H Goldstein, Emily J Robinson, Izabela Pilecka, Iain Perdue, Iris Mosweu, Julie Read, Harriet Jordan, Matthew Wilkinson, Gregg Rawlings, Sarah J Feehan, Hannah Callaghan, Elana Day, James Purnell, Maria Baldellou Lopez, Alice Brockington, Christine Burness, Norman A Poole, Carole Eastwood, Michele Moore, John Dc Mellers, Jon Stone, Alan Carson, Nick Medford, Markus Reuber, Paul McCrone4, Joanna Murray, Mark P Richardson, Sabine	Cognitive behavioural therapy compared with standardised medical care for adults with dissociative non-epileptic seizures: the CODES RCT	Health Technology Assessment, Volume 25, Issue 43

	Landau and Trudie Chalder		
Max Henderson	Max Henderson and Simon M Everett	Foreign body ingestion: understanding the implications	Frontline Gastroenterology Published Online First: 23 June 2021
Nazish Hashmi	Nazish Hashmi and Sunitha Muniyappl	Resilience-culture of support	BJPsych Open
Edward Knights, Monique Schelhase, Rhys Jones and Lou Burk	Edward Knights, Monique Schelhase, Rhys Jones and Lou Burk	Improving physical health care for inpatients with eating disorders	BJPsych Open
Nyakomi Adwok and Sharon Nightingale	Nyakomi Adwok and Sharon Nightingale	The person behind the label: co-production as a tool in teaching about borderline personality disorder	BJPsych Open, Volume 7, Issue S1, pages
Oliver Turner and David Leung	Oliver Turner and David Leung	On-call medical seclusion reviews: are we meeting MHA code of practice (COP) requirements?	BJPsych Open
Daniel Romeu, Christiana Elisha-Aboh, Hamza Abid, Tariq Mahmood and Fiona Lacey	Daniel Romeu, Christiana Elisha-Aboh, Hamza Abid, Lauren Merry, Tariq Mahmood and Fiona Lacey	Clinical audit investigating the recognition of tardive dyskinesia in an acute inpatient setting	BJPsych Open

Daniel Romeu and Tariq Mahmood	Daniel Romeu, Rhiya Sood, Richard Hughes, Tariq Mahmood and Alastair Cardno	Investigation and management of vitamin D insufficiency and deficiency in acute adult psychiatric admissions: a clinical audit	BJPsych Open
Oliver Turner and David Leung	Oliver Turner and David Leung	On-call medical seclusion reviews: are we meeting MHA code of practice (COP) requirements?	BJPsych Open
David Hall, Thomas Lane and Alexander Harbinson	David Hall, Thomas Lane and Alexander Harbinson	Creating a virtual, clinical scenario based teaching programme for foundation doctors in Leeds	BJPsych Open
Samuel Mammolotti Parkinson, Ismail Laher and Shola Johnson	Samuel Mammolotti Parkinson, Ismail Laher and Shola Johnson	Innovating in CMHT's: mental health wellbeing group visits	BJPsych Open
Heena Mistry	Heena Mistry	The monitoring and use of Pro re nata (PRN) psychotropic medication for people with learning disabilities on an inpatient ward	BJPsych Open, Volume 7, Issue S1, pages S92-S93.
Guy Brookes	Daniel Whitney and Guy Brookes	Evaluation of a novel consultant psychiatric clinic in general practices and its effects on secondary mental health contact and the general practitioners' perspectives	BJPsych Open, Volume 7, Issue S1, June 2021

Christiana Elisha-Aboh, Amy Seukeran, Phuong Pham, Mohammad Musabbir and Helen Turner	Christiana Elisha-Aboh, Amy Seukeran, Phuong Pham, Mohammad Musabbir and Helen Turner	A physicians' compliance in identifying patients' as drivers and providing advice on the Driver and Vehicle Licencing Agency (DVLA) guidelines	BJPsych Open, Volume 7, Issue S1, June 2021
Syed Nabeel Javaid	Syed Nabeel Javaid	The role of animal-assisted therapy in the management of people with dementia: a systematic literature review	BJPsych Open, Volume 7, Issue S1, June 2021
Katie Blissard-Barnes and Richard Westmoreland	Katie Blissard-Barnes and Richard Westmoreland	Assessing the delivery of smoking cessation interventions in adult inpatients	BJPsych Open, Volume 7, Issue S1, June 2021
Daniel Romeu and Peter Trigwell	Daniel Romeu, , Carolyn Czoski-Murray, Samuel Relton, Andrew Walker, Peter Trigwell, Jenny Hewison, Robert West, Mike Crawford, Matt Fossey, Claire Hulme and Allan House	Experiences of people seen in an acute hospital setting by liaison mental health services: responses from an online survey	BJPsych Open, Volume 7, Issue S1, June 2021
Wendy Neil	Adam Hurlow, Jonathan Hurlow, Wendy Neil, Alice Pullinger	Advance care planning ahead of life-altering clinical deterioration in secure settings: Do not wait until a crisis	Criminal Behaviour and Mental Health: Early view
Andreea Steiu, Emma Diggins and Nagulan Thevarajan	Andreea Steiu, Emma Diggins and Nagulan Thevarajan	Audit of physical health monitoring on admission to Mill Lodge (CAMHS Inpatient Unit, York)	BJPsych Open, Volume 7, Issue S1, June 2021

<p>Elisabeth Bond, Stephanie Vel En Tial and Clare Stephenson</p>	<p>Elisabeth Bond, Stephanie Vel En Tial and Clare Stephenson</p>	<p>An audit on consent to treatment within forensic inpatient units at the Newsam Centre</p>	<p>BJPsych Open, Volume 7, Issue S1, June 2021</p>
	<p>Louise Combes and Lauren A Bradley</p>	<p>To Jurassic Park via Australia: A case study showing how dramatherapy enabled the creation and maintenance of embodied metaphors to support recovery from early psychosis</p>	<p>Dramatherapy. Volume 41, Issue 1, pages 37-49.</p>
<p>Zoe Goff, Hannah Weston and Laura Mansbridge</p>	<p>Zoe Goff, Allan House, Elspeth Guthrie, Hannah Weston and Laura Mansbridge</p>	<p>Diabetes Care in an Acute Psychiatric Inpatient Setting – A Logic Model For Service Delivery</p>	<p>Faculty of Liaison Psychiatry Annual Conference 2021- Poster Viewing Area - Poster 18</p>
	<p>Jennie Lister, Lu Han, Sue Bellass, Jo Taylor, Sarah L Alderson, Tim Doran, Simon Gilbody, Catherine Hewitt, Richard IG Holt, Rowena Jacobs, Charlotte EW Kitchen, Stephanie L Prady, John Radford, Jemimah R Ride, David Shiers, Han-I Wang and Najma Siddiqi</p>	<p>Identifying determinants of diabetes risk and outcomes for people with severe mental illness: a mixed-methods study</p>	<p>Health Services and Delivery Research, Volume 9, Issue 10</p>

<p>Bethany Woods, Alison O'Connell, Sally Rawcliffe-Foo and Kerry Hinsby</p>	<p>Brendan J Dunlop, Bethany Woods, Jonny Lovell, Alison O'Connell, Sally Rawcliffe-Foo and Kerry Hinsby</p>	<p>Sharing Lived Experiences Framework (SLEF): a framework for mental health practitioners when making disclosure decisions</p>	<p>Journal of Social Work Practice</p>
<p>Mary Franklin-Smith, William Rhys Jones and Monique Schelhase.</p>	<p>Katie Richards, Michaela Flynn, Amelia Austin, Katie Lang, Karina Allen, Ranjeet Bassi, Gabrielle Brady, Amy Brown, Frances Connan, Mary Franklin-Smith, Danielle Glennon, Nina Grant, William Rhys Jones, Kuda Kali, Antonia Koskina, Kate Mahony, Victoria Mountford, Nicole Nunes, Monique Schelhase, Lucy Serpell and Ulrike Schmidt</p>	<p>Assessing implementation fidelity in the First Episode Rapid Early Intervention for Eating Disorders service model</p>	<p>BJPsych Open. Volume 7 Issue 3.</p>
<p>Tariq Mahmood, Anneka Tomlinson and Jamshid Nazari</p>	<p>Tariq Mahmood, Mohammed E El-Asrag, James A Poulter, Alastair G Cardno, Anneka Tomlinson, Sophia Ahmed, Ahmed Al-Amri, Jamshid Nazari, Joanna Neill, Rifka S Chamali, Nancy Kiwan, Suhaila Ghuloum, Hamid A Alhaj, Juliette Randerson Moor, Shabana Khan, Hassen Al-Amin, Colin A Johnson, Peter Woodruff, Iain D Wilkinson, Manir Ali,</p>	<p>A Recessively Inherited Risk Locus on Chromosome 13q22-31 Conferring Susceptibility to Schizophrenia.</p>	<p>Schizophrenia Bulletin, Volume 47, Issue 3, May 2021, Pages 796–802,</p>

	Steven J Clapcote and Chris F Inglehearn.		
Lucy Tindall and Barry Wright	Lucy Tindall, Paul Toner, Antonina Mikocka-Walus and Barry Wright	Perceptions of and Opinions on a Computerized Behavioral Activation Program for the Treatment of Depression in Young People: Thematic Analysis.	Journal of Medical Internet Research, Volume 23, Issue 4. April 2021
George Crowther	George Crowther, Manimegalai Chinnasamy, Sarah Bradbury, Laura Shaw, Sara Ormerod, Alison Wilkinson, Rebecca Chubb, Mazen Daher, Pramod Kumar, Andrew Gaskin, Karen Williams, Justine Brennan-Tovey, Angus Brown, Eleanor Stebbings, Sunita Sahu, Roger Smyth, Hilary Kinsler, Stephen O'Connor, Andrew Wells, Ross Overshott, Kehinde Junaid, Aparna Mordekar, Jenny Humphries, Karen James, Shweta Mittal, Sarita Dasari, Hugh Grant-Peterkin, Niall Campbell, Robert West, George Tadros, Elizabeth L Sampson	Trends in referrals to liaison psychiatry teams from UK emergency departments for patients over 65	International Journal of Geriatric Psychiatry: Early view
Daniel Romeu	Daniel Romeu	Is climate change a mental health crisis?	BJPsych Bulletin (2021) Page 1.

For more information please contact:

Research and Development

T: 0113 85 52387

E: research.lypft@nhs.net

 [@LypftResearch](https://twitter.com/LypftResearch)

About Leeds and York Partnership NHS Foundation Trust:

Leeds and York Partnership NHS Foundation Trust provides specialist mental health and learning disability services to the people of Leeds and across Yorkshire and the Humber.

Visit: www.leedsandyorkpft.nhs.uk