



the Pathway Star

Get to know us



Becky

(Lived Experience Practitioner)

The Pathway Development Service (PDS) aims to improve outcomes and pathways for adults with complex emotional needs who are under the care of (or at risk of escalation into) secure services or those aged 16 to 18 who are admitted to CAMHS inpatient units.

We work across the regions' three provider collaboratives: West Yorkshire, South Yorkshire, North Yorkshire and the Humber.

This newsletter has been developed with the aim of connecting with teams across the region. We hope that reading about the ways we support teams and pathways will give you insight into the work we do and how you can get in touch.

Each issue will have a theme and it makes sense to start with 'Get to know us'.



Mike

(Caseworker)

When working with people who have experienced trauma, it isn't surprising if some of the things you see or hear can affect you in the workplace or at home. Give yourself some time to think about how your team approaches this.

Do you have time to debrief with other team members? Do you feel able to talk about how the work affects you with someone who understands? Do you have space to make sense of the impact your work has on you and your team? If not, this may be something we could help with.

What We Offer

- ◆ Initial Opinion
- ◆ Consultation
- ◆ Structured Thinking Spaces
- ◆ Reflective Space
- ◆ Formulation Support
- ◆ Training
- ◆ Brief Case Reviews
- ◆ Housing and Resettlement Support



Viki

(Caseworker)





Housing and Resettlement

As a service, the H&R team are passionate about supporting accommodation providers to work with clients in a trauma informed way, by offering training, consultation, and reflective practice. This hopes to increase knowledge and confidence at service level and minimise the risk of tenancy breakdowns.



Ashleigh
(H&R Caseworker)



Referrals LIVE

In order to move away from the traditional transactional process of sending/receiving referral forms, we are piloting a new way of processing referrals using a virtual platform: Referrals LIVE. This gives teams the opportunity to bring and discuss the difficulty/dilemma outlined in the enquiry form to a video meeting with us, opening up discussion and enabling us to think *with* the team as to what may be helpful. This has been trialled a couple of times in the past few months, receiving positive feedback so far.



Steph
(Caseworker)



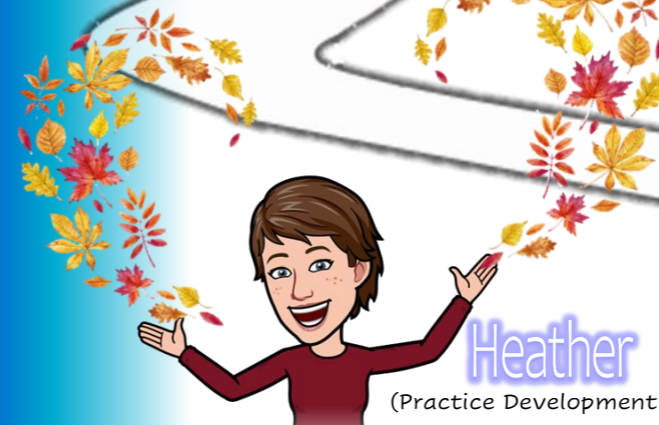
Faye
(Assistant Psychologist)

Carers

The PDS work in partnership with Carers Leeds, a charity supporting unpaid carers in Leeds.

We help run two groups, one: peer support and the second: psychoeducational. These groups are accessible to anyone who's loved one with complex emotional needs/ a 'personality disorder' diagnosis lives, or is under the care of, services across any of the three regions we cover.

For more information, email: Emergecarers.lypft@nhs.net



Heather
(Practice Development)

Good to Know

Demographic-

16-18 y/o who are currently in any CAMHS inpatient setting

18+ y/o who are currently in, or at risk of entering, secure care

Inpatient or forensic teams working with individuals within the above groups.

Areas We Cover

As discussed, we work across the Yorkshire and Humber region specifically covering the following provider collaboratives:

- ◆ West Yorkshire
- ◆ South Yorkshire
- ◆ North Yorkshire and Humber

*Referrals relating to an individual must have a home area that falls within the above areas.

Examples of Recent Work

Since our service specification officially changed in January this year, we have been working hard to develop new approaches to the way we work and striving to connect with a variety of teams within the region. We are continually thinking about how we can develop including through experience and evaluation of our interventions- some of the work we have done so far includes:

- ◆ Consultations with low secure providers, using an interpersonal dynamics model
- ◆ Piloting the offer of a structured thinking space to a specialist community forensic team
- ◆ Contracting to offer a structured thinking space to a housing provider
- ◆ We are also striving to develop broader pieces of work with secure hospitals from each of the three PC's. Currently we are starting projects in West and North Yorkshire and hope to expand on this in the coming year.
- ◆ Hayley and Heather held a Q&A presentation with ICB colleagues from across the region.
- ◆ We are also currently involved in community forensic workstreams in West Yorkshire PC and North Yorkshire & Hull PC.

We are really keen to connect with teams, so if you have service user that meets our criteria, a difficulty/dilemma that's left you feeling a bit stuck or you've noticed that similar difficulties keep reoccurring within your team, then please do get in touch, maybe we can help.

Referrals

Referral/enquiry forms can be found on our website:

<https://www.leedsandYorkpft.nhs.uk/our-services/pathway-development-service-yorkshire-humberside/>



Hayley
(CTM)

