

Contact us

To get in touch, please contact the Gender Outreach Workers on:

Tel: 0113 244 4209 Email: genderoutreachworker.lypft@nhs.net

For general enquiries regarding your Leeds GIS referral, contact:

Tel: 0113 855 6346 Email: gid.lypft@nhs.net

The Leeds GIS web page contains information about the service and waiting times: www.leedsandyorkpft.nhs.uk

Yorkshire MESMAC Tel: 0113 244 4209 www.mesmac.co.uk

 facebook.com/LeedsGenderOutreachWorkers

Yorkshire
MESMAC

GROUP OF SERVICES

NHS

Leeds and York Partnership

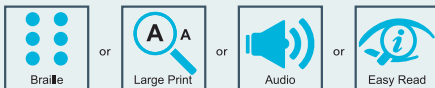
NHS Foundation Trust

Leeds Gender Outreach Workers

Supporting trans, non-binary and gender non-conforming people on the Leeds Gender Identity Service waiting list from Leeds, Bradford, Hull, Wakefield and York

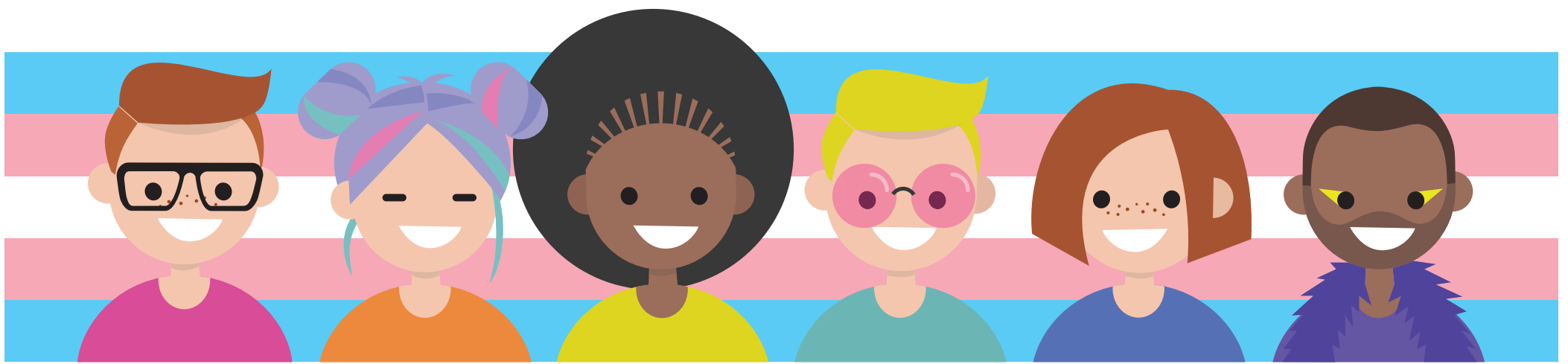
Would you like this information in an alternative format?

For a translation of this document, an interpreter, a sign language interpretation or a version in:



please contact the Interpretation and Translation Support Team on 0113 85 56418/9 or translation.lypft@nhs.net





We are here to provide support. We host drop-in sessions, support groups and social groups. We'll also support you one to one if that's what you feel you need.

Drop-in session

Our Drop-in sessions are friendly and open. You're welcome to pop by and ask questions or discuss issues that interest or worry you. We're not counsellors but sometimes it just helps to talk to someone who knows where you're at.

Support and social groups

Our support and social groups are an informal and friendly way to meet and socialise with other trans and non-binary people. Everyone has a story to tell and by listening and maybe sharing you'll gain lots of insights, know-how and support from people who understand how you might be feeling.

One to one support sessions

We can offer one to one sessions whilst you're on the waiting list at Leeds Gender Identity Service. These can be face to face or over the telephone. You can ask us questions and seek advice whilst you wait for your assessment. We'll do our best to signpost and provide you with the information and support you feel you need.

Who are we?

Hi, I'm Sophie. I am proud to be one of two Gender Outreach Workers for the Leeds GIS. When I went through the process of transition there was no help or support available so I understand how important it is to be supported. We have many years of experience helping our communities

People find our support helpful in different ways. Some people feel better for speaking to someone or making new connections at groups. Some people are pleased we provide local support much closer to home. We visit other local events and groups too. Please get in touch and help us shape what we provide in your area

